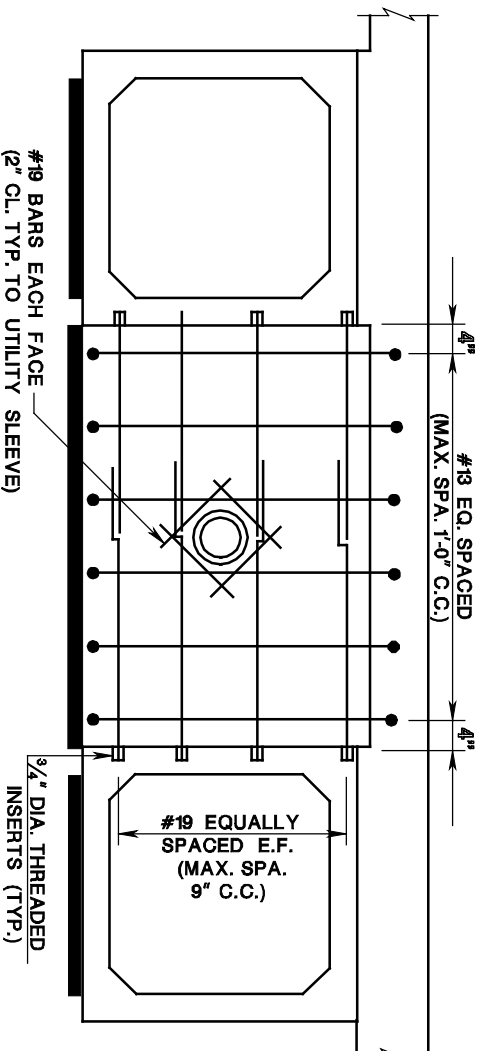


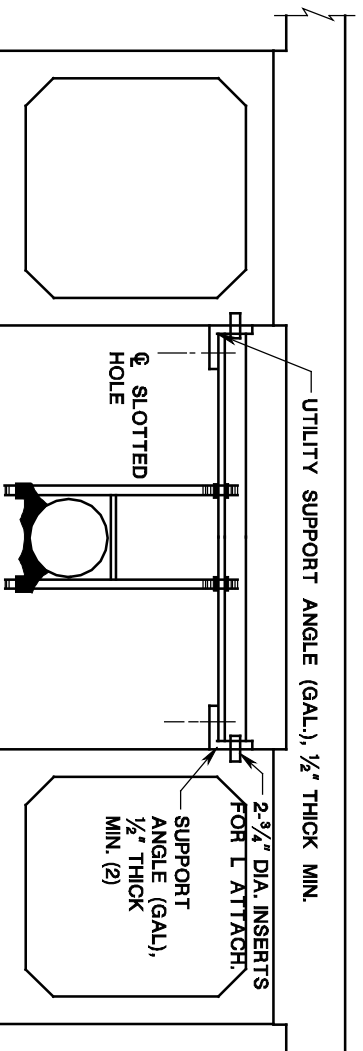
# P.C. SPREAD BOX BEAMS UTILITY DETAILS

ISSUED: 2009

PLATE  
3.10-23



UTILITY AT FULL DEPTH DIAPHRAGM



TYPICAL INTERMEDIATE UTILITY SUPPORT

## NOTES:

1. UTILITIES SHALL NOT PROTRUDE BELOW THE BOTTOM OF THE BEAMS.
2. THE SUPPORT ANGLES SHALL BE ATTACHED TO EACH BOX BEAM WITH 2-3/4" DIA. BOLTS (MIN.). THREADED INSERTS SHALL BE PROVIDED IN THE BOX BEAMS FOR ANGLE ATTACHMENTS. THE UTILITY SUPPORT ANGLE SHALL BE SUPPLIED WITH SLOTTED HOLES FOR HORIZONTAL FIELD ADJUSTMENT.
3. A FULL DEPTH SLEEVED DIAPHRAGM MAY BE USED AT INTERMEDIATE DIAPHRAGM LOCATIONS AS LONG AS THE UTILITY IS APPROXIMATELY CENTERED IN THE DIAPHRAGM AND THE UTILITY IS LESS THAN HALF THE DEPTH OF THE DIAPHRAGM. OTHER DETAILS ARE ACCEPTABLE PENDING APPROVAL BY THE MANAGER, BUREAU OF STRUCTURAL ENGINEERING.